

Un embalse para Irrigación del 'Pueblo' en la Planicie de Inundación del Tonle Sap

Dr. John Marston

XI Seminario Internacional de Investigación
sobre la Cuenca del Pacífico

22-23 de septiembre de 2011

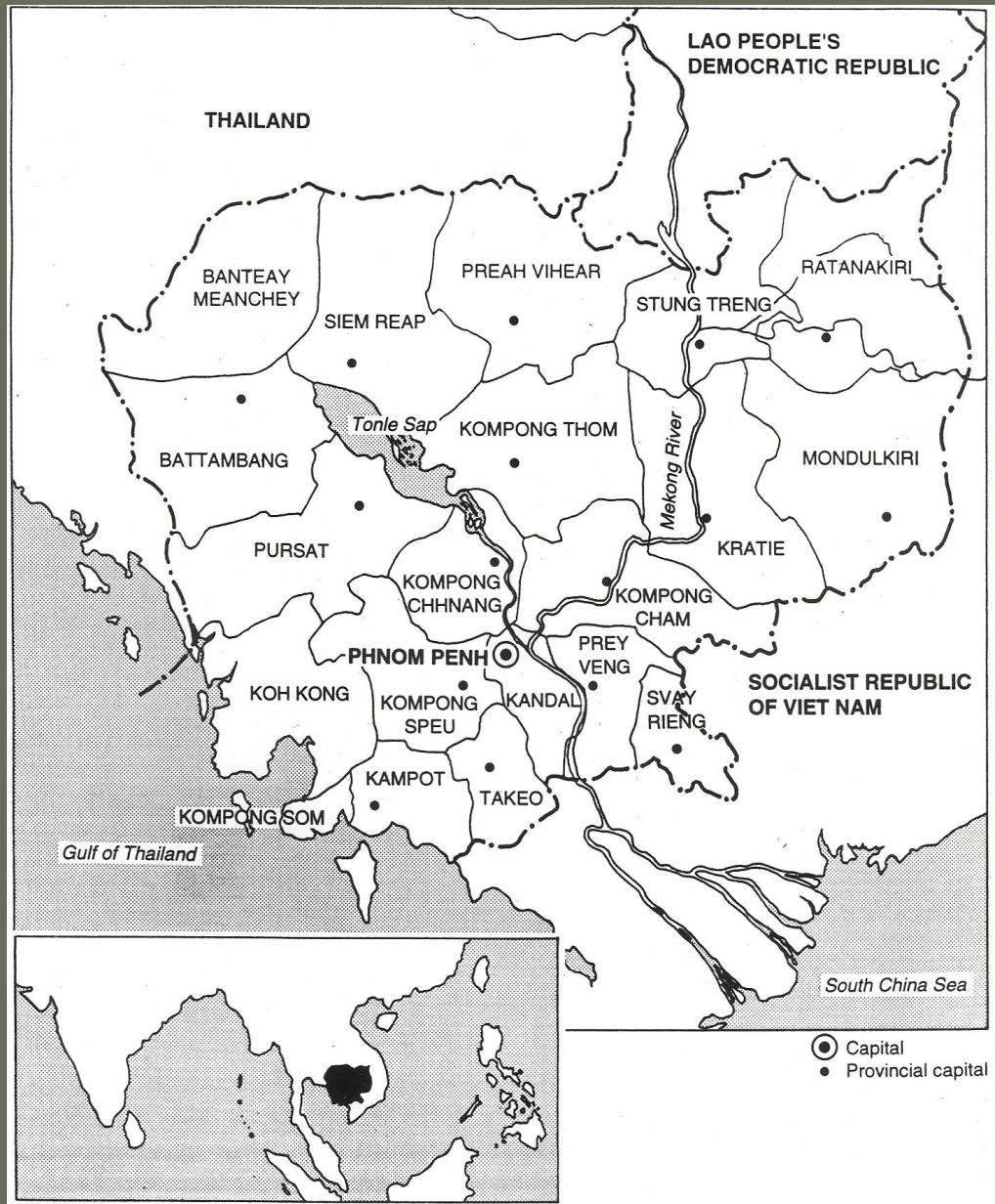
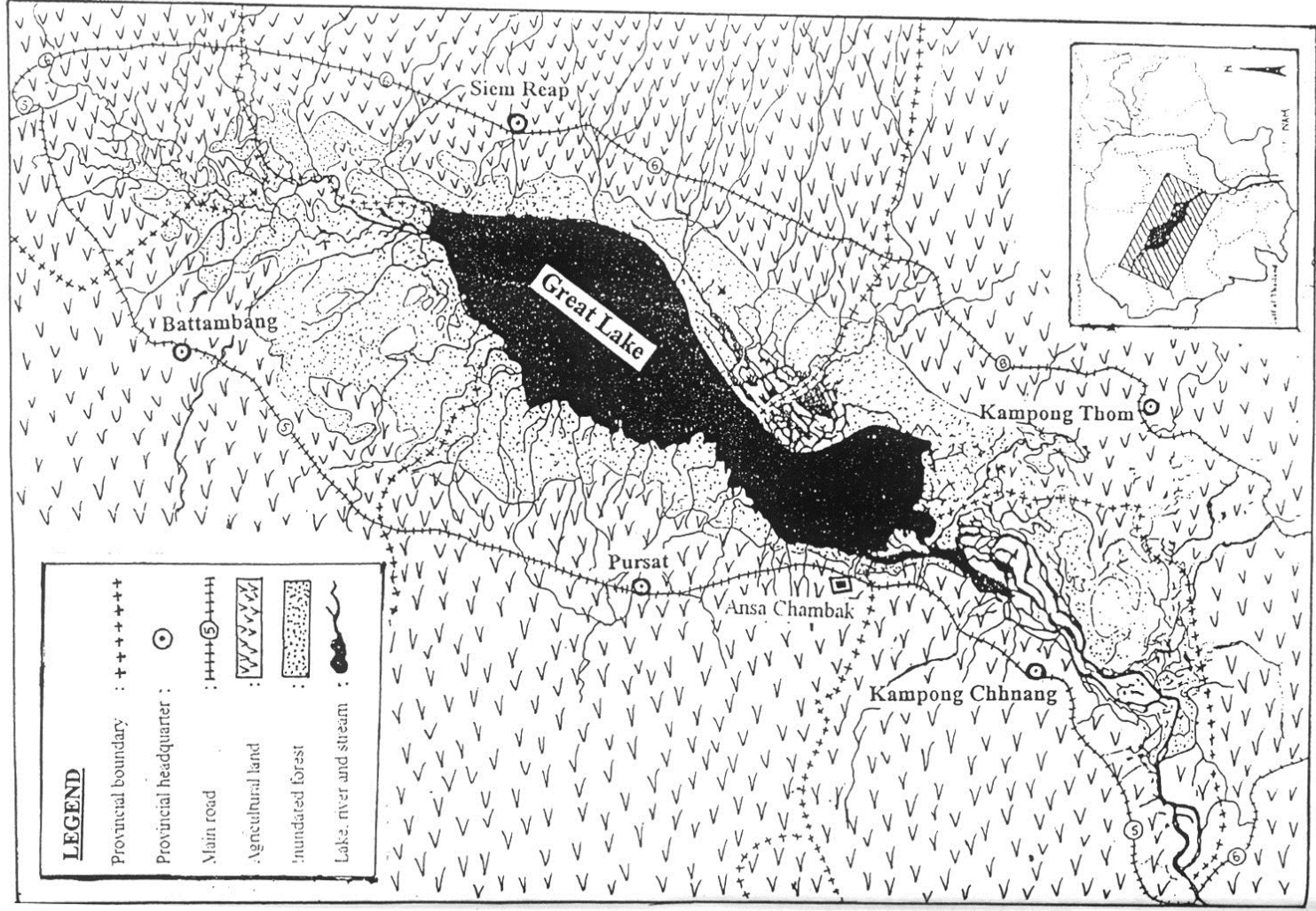
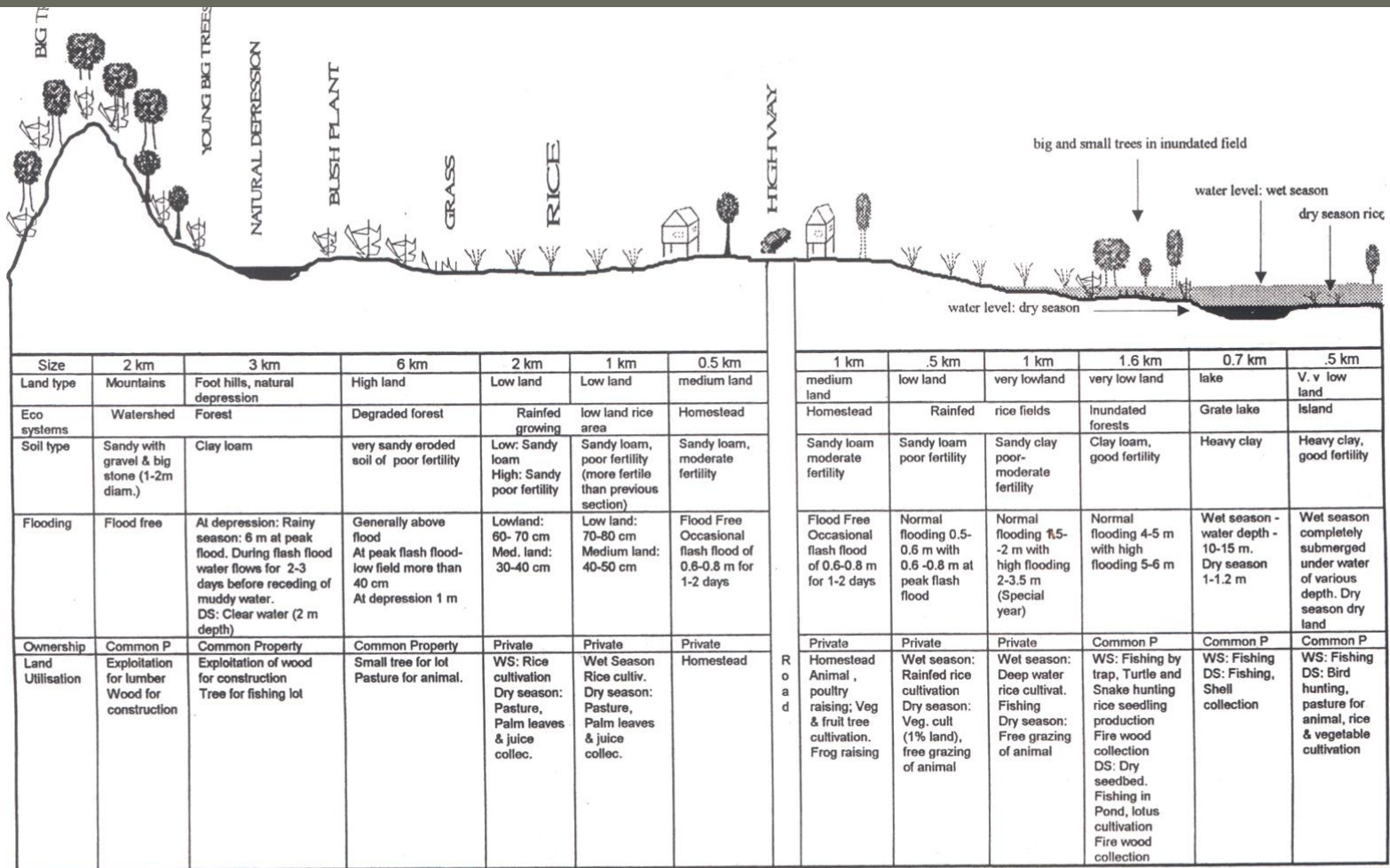


Figure 2: Forest, Fishing and Farming Ecosystems of Northwest Cambodia



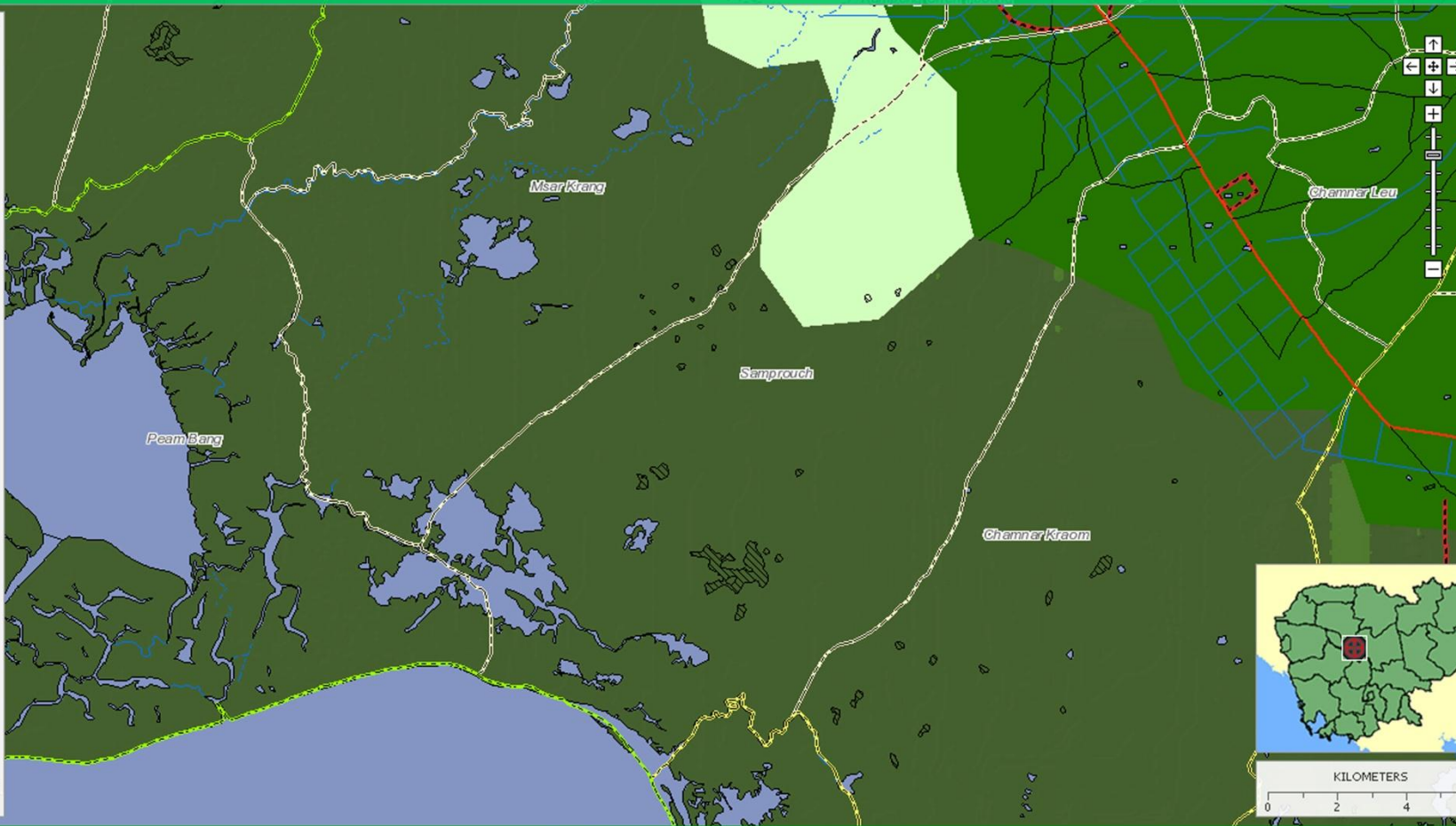


S ← ————— → N

Figure 4: Transact of Ansa Chambok Commune cutting through Thkol Thom, Ksach loeth, Kompong Thkol village

Map Legend

- Base Map
- Arsenic Hazard
- Landmine and UXO Contami
- Rainfall and Temperature Pa
- Community Forestry
- Seed Source Sites
- Electricity and Hydropower
- Wetlands and Catchment Are
- Area of electricity
- Tonle Sap Bioshpere Reserv
- Community Fisheries
- Mineral Resources
- Geology
- Dry Periods
- Landuse 2002
- Poverty Level
- Terrestrial Vegetation and La
- Land Cover Non Forested Are
- Forest Concessions
- Protected Areas and Protecte
- Forest Cover 2008
- Forest Cover 2002
- Forest Cover 1997
- Forest Cover 1976
- Forest Disturbance
- The Coastal Zone
- Rice Ecosystems
- Soil Types
- Soils Fertility
- Soils of Main Rice Growing A
- Geographical Relief



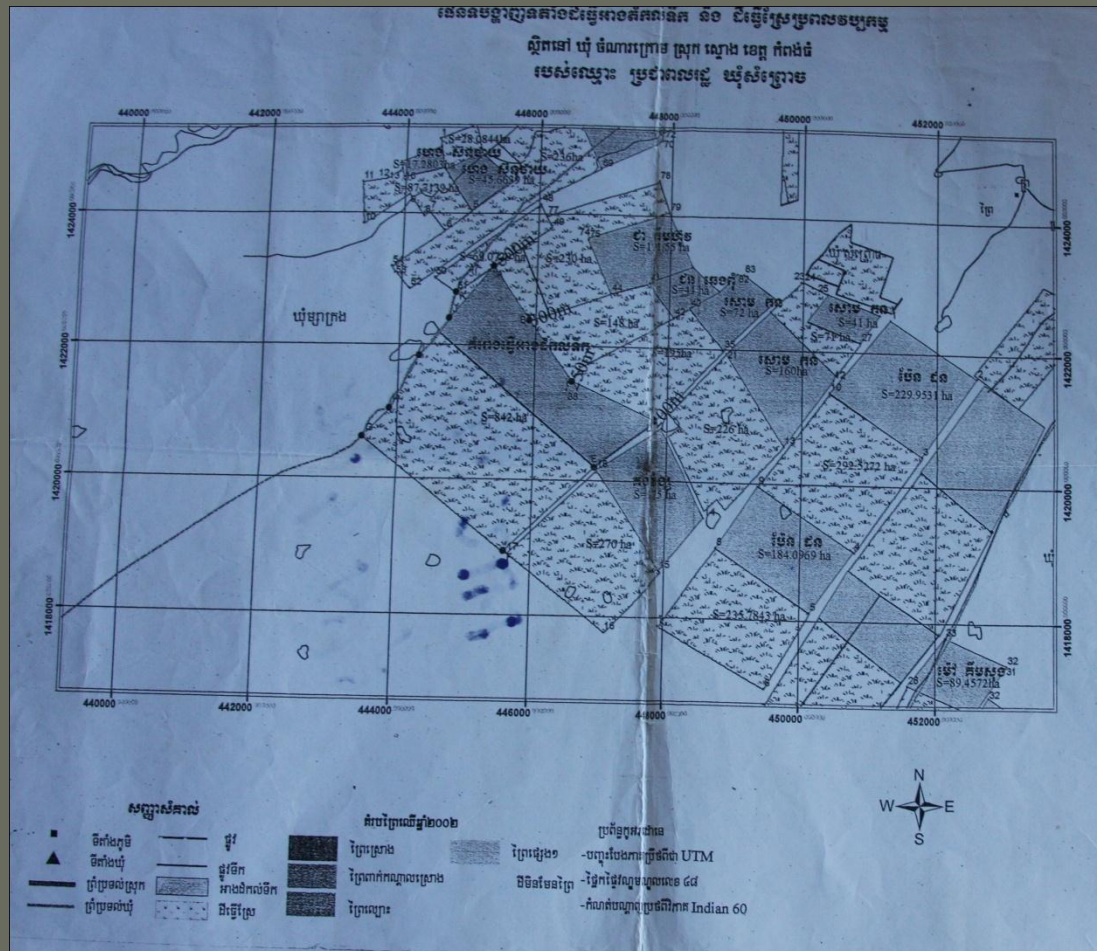
March 7 Reservoir, Batheay district, Kampong Cham



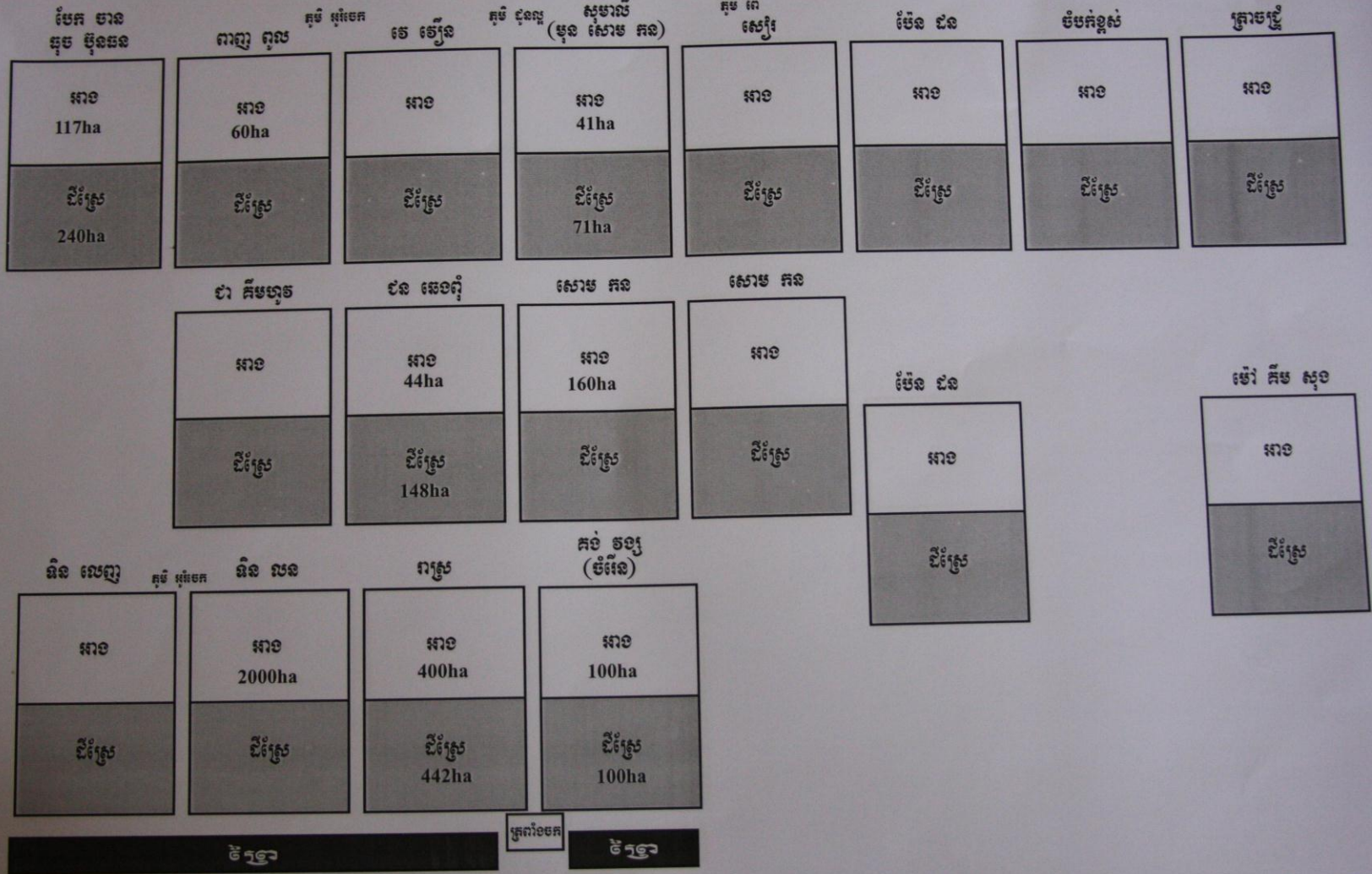


Samprouch commune, Stoung district

2007 (?) map of reservoirs in Samrouch subdistrict, Stoung district

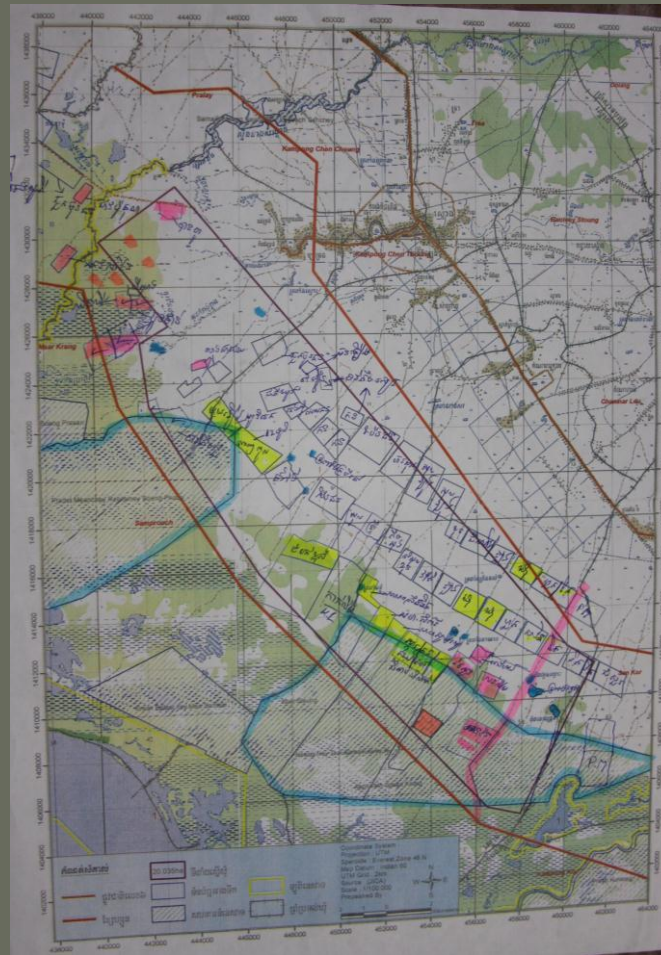


ផែនទីអាង ឃុំ សំរោង



បឹង ឧត្តសាម

Map of reservoirs in three sub-districts





Privately owned reservoir



Mechanically harvested fields on the Tonle Sap floodplain





Manual harvesting in “people’s” reservoir



Burning forest areas



Harvesting near area of flooded forests.



Simple frame to be covered with canopy for shelter by peasants camping out to prevent authorities from destroying reservoir.

Flags of Cambodia
and of the Cambodian People's
Party put up around
People's Reservoir as reservoir
Community appeals for it
not to be destroyed.

